

# The Extreme Environment Simulator



# Extreme environmental conditions in real emergency scenarios



# Extreme environmental conditions in real emergency scenarios

**COLD WATER SUBMERSION**



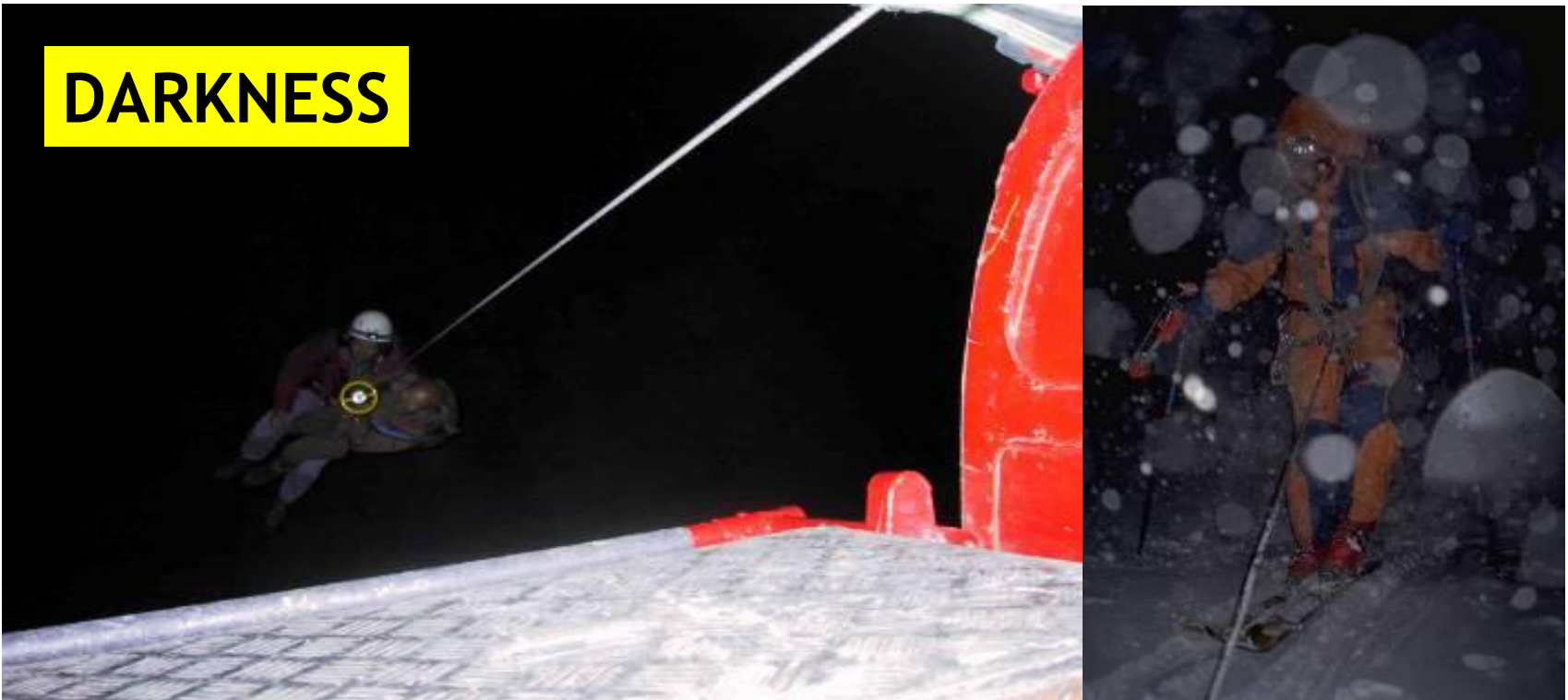
# Extreme environmental conditions in real emergency scenarios

**COLD WATER SUBMERSION**



# Extreme environmental conditions in real emergency scenarios

**DARKNESS**



# Extreme environmental conditions in real emergency scenarios



# Extreme environmental conditions in real emergency scenarios

**COLD & DARKNESS**



# Extreme environmental conditions in real emergency scenarios

**RAIN AND ICE**

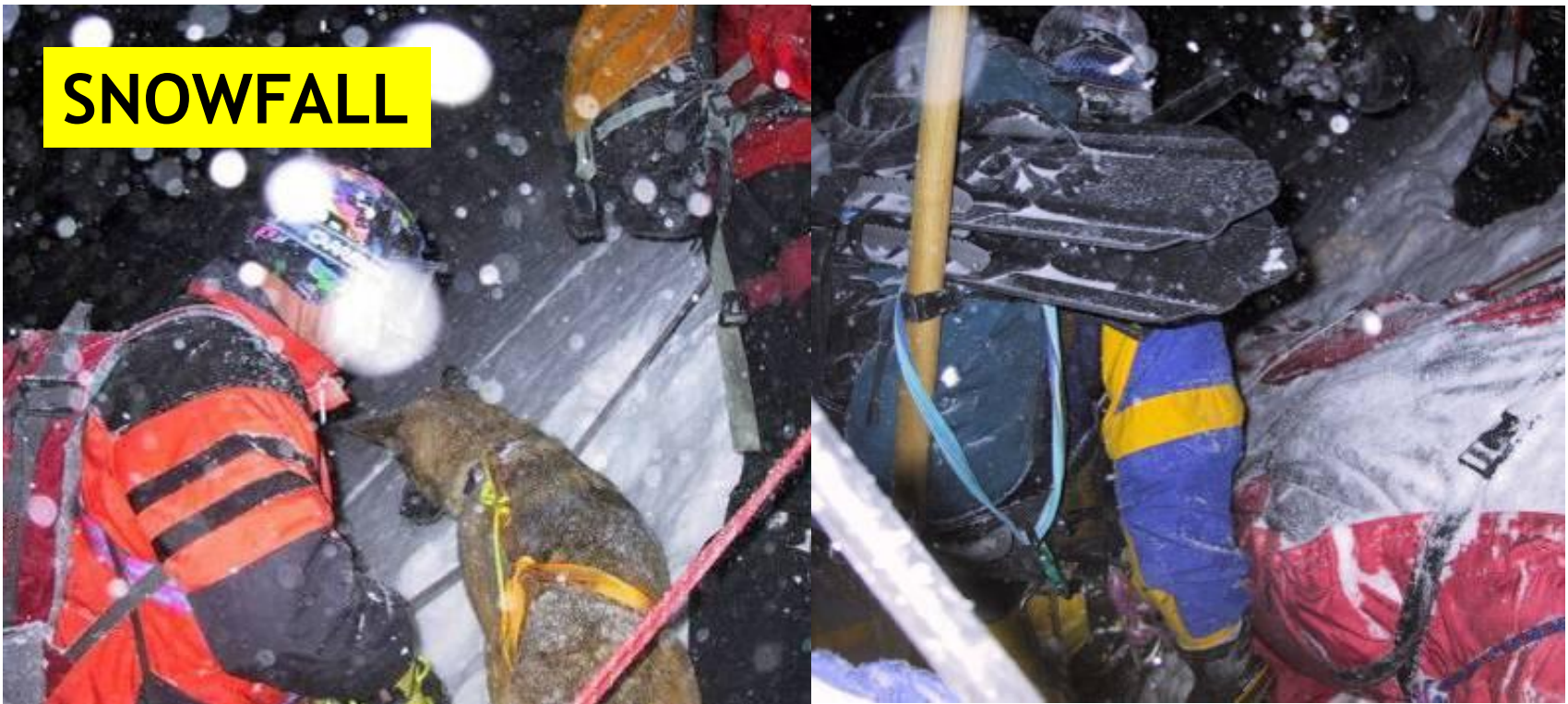


# Extreme environmental conditions in real emergency scenarios

**WIND**



# Extreme environmental conditions in real emergency scenarios



# Extreme environmental conditions in real emergency scenarios

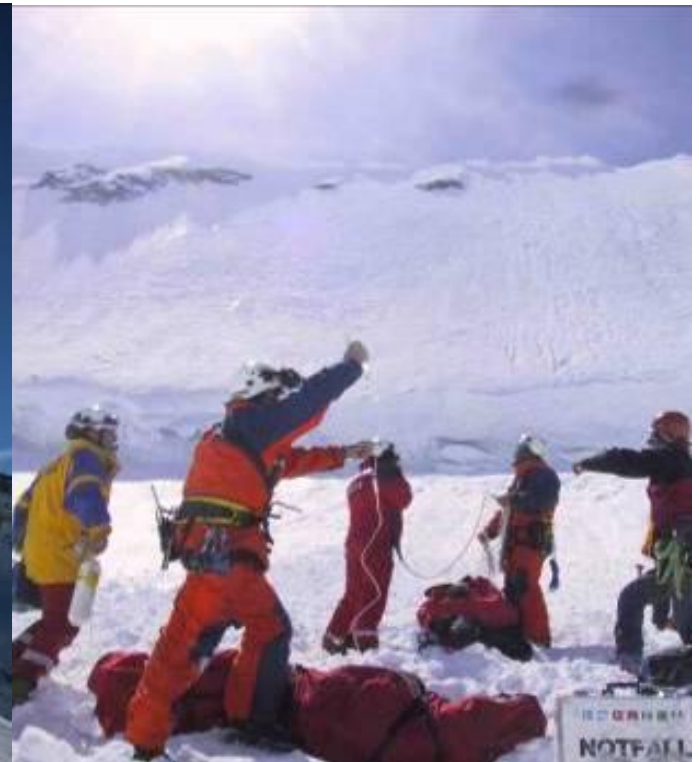


# Extreme environmental conditions in real emergency scenarios



# Extreme environmental conditions in real emergency scenarios

**UV RADIATION**



# Extreme environmental conditions in real emergency scenarios

**SPECIAL CONDITIONS**



# Extreme environmental conditions in real emergency scenarios

Environmental factor	from	to	unit
Temperature	-40	+40	°C
Athmospheric pressure (altitude)	760 (0)	252 (8850)	mmHg (m)
Wind speed	0	35	m/sec
Relative humidity	0	100	%
Rain	0	50	mm/hour
Snowfall	0	5	cm/hour
Ultraviolet radiation	0	12	UV-index

Environmental factors affecting humans in mountain and remote areas with their ranges

# Field investigations under unpredictable conditions



# Field investigations under unpredictable conditions



# Standardised test conditions prerequisite for reliable results



# Standardised test conditions prerequisite for reliable results



# Extreme environment simulator for experimental investigations



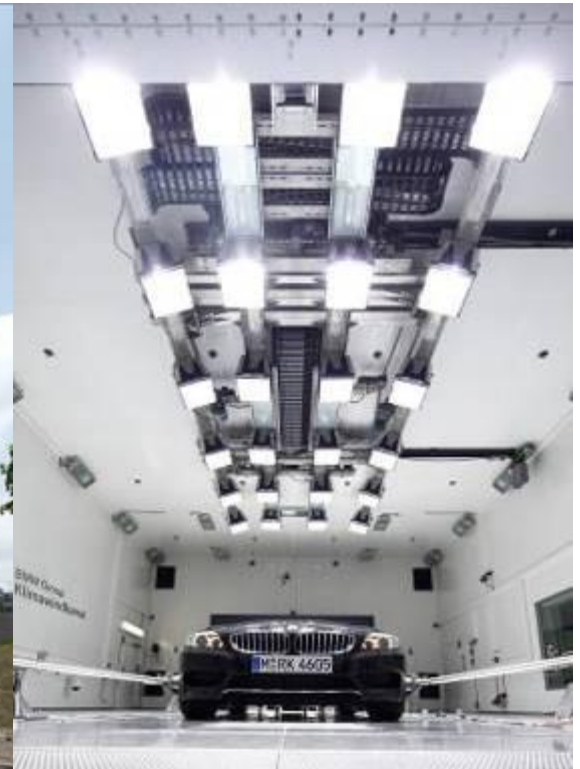
# Extreme environment simulator for experimental investigations



# Extreme environment simulator for experimental investigations



# Extreme environment simulator for experimental investigations



# Extreme environment simulator for experimental investigations



# Extreme environment simulator for experimental investigations

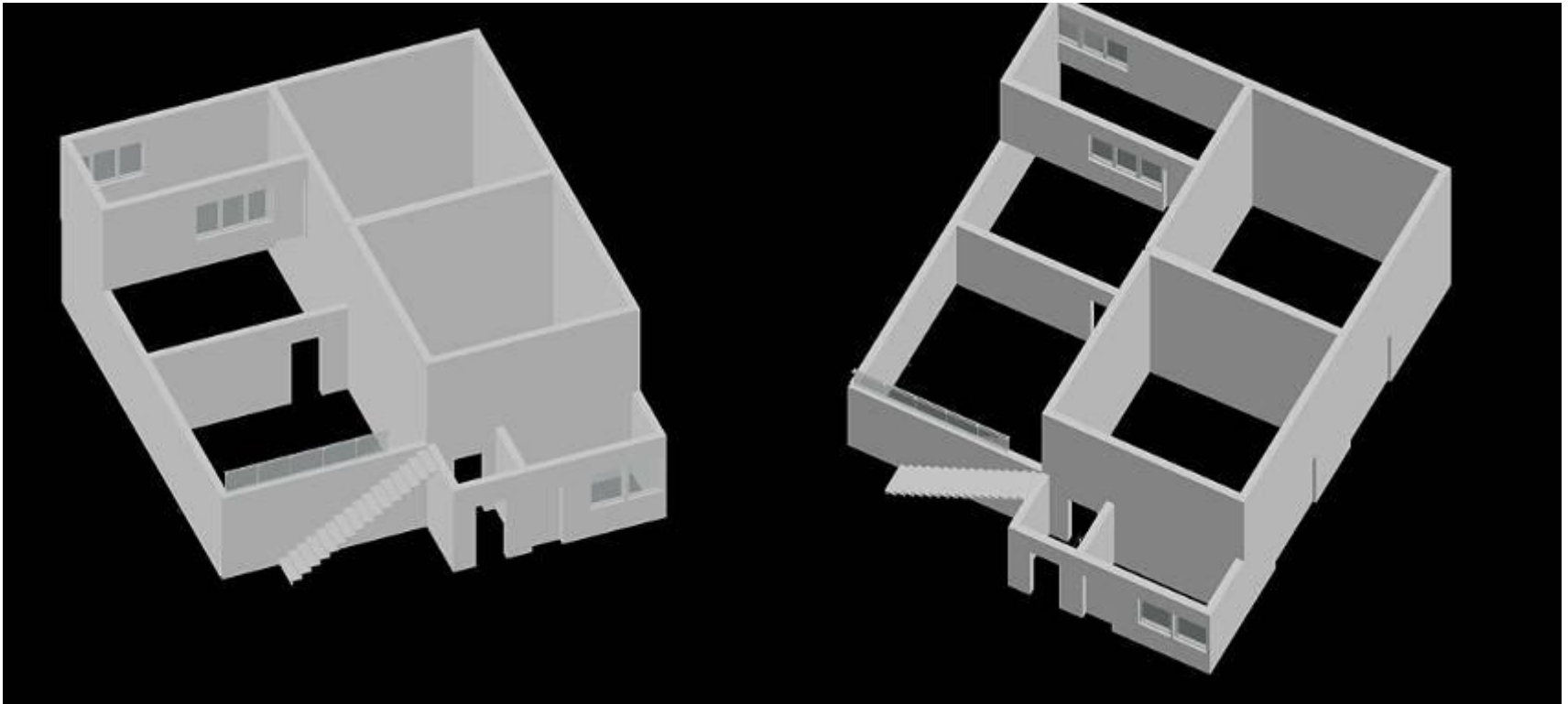


# Extreme environment simulator for experimental investigations

Simulated environmental factor	from	To	unit
Temperature	-20	+40	°C
Air pressure (simulated altitude)	760 (0)	632.5 (5000)	mmHg (m)
Wind speed	0	20	m/sec
Humidity (above 4°C temperature)	10	100	%
Rain	0	30	mm/hour
Snowfall	0	3	cm/hour
Ultraviolet rays	0	5	UV-index

Environmental factors simulated in the extreme environment chamber

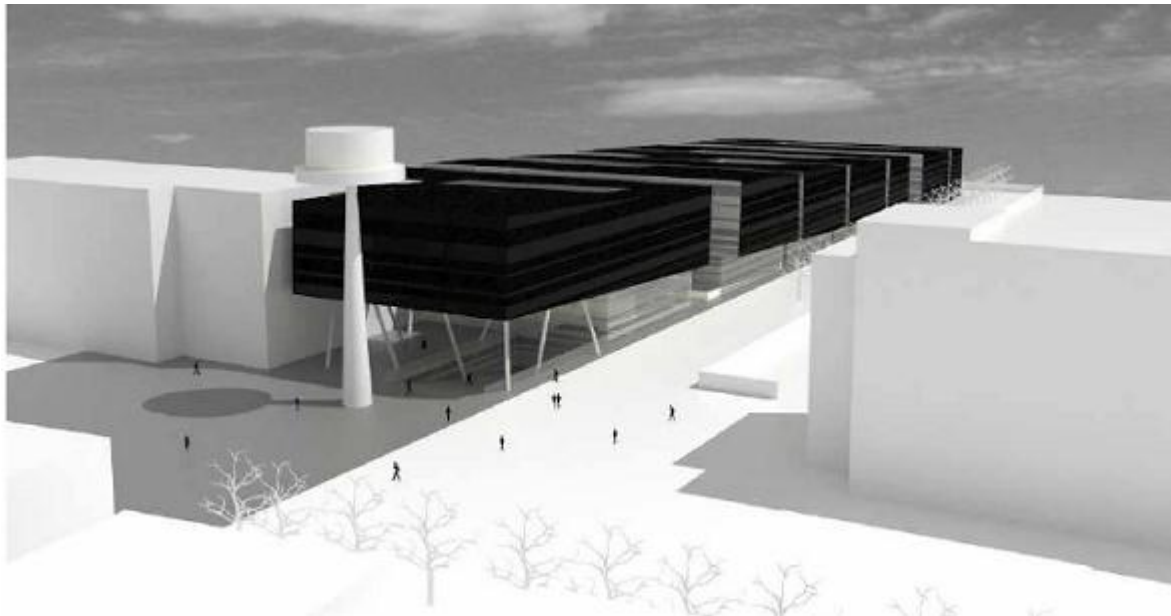
# Extreme environment simulator for experimental investigations



# Extreme environment simulator for experimental investigations



# Extreme environment simulator for experimental investigations



Technology Park Bozen/Bolzano

# The Extreme Environment Simulator

